

Mountain Lion Server Setup Guide

shah@mac.com

Mountain Lion Installation

Welcome

In just a few steps, you can register and set up your Mac.



- Lithuania
- Luxembourg
- Macao SAR China
- Macedonia
- Madagascar
- Malawi
- Malaysia**
- Maldives

☒ Show All



Back



Continue

Do you need to hear instructions for setting up your Mac?

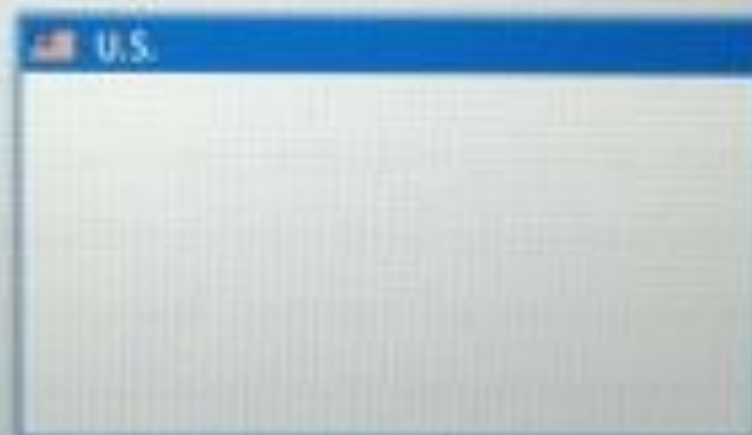
To learn how to use VoiceOver to set up your computer, press the Escape key now.

To install Mountain Lion server, start with a fresh install of Mountain Lion. Choose Show All and choose Malaysia. Click Continue.

Select Your Keyboard



Choose a keyboard layout.



☐ Show All



Back



Continue

Choose U.S. and click Continue.

Select Your Wi-Fi Network

If you connect to the Internet using a wired network or other network device, click Other Network Options. If you would rather set up your network connection later, click Continue.



Mypalace	🔒	📶
aksufarida@unifi	🔒	📶
ABCD	🔒	📶
uas1ni69-wireless	🔒	📶
shotoh@unifi	🔒	📶
SL-Router	🔒	📶
Other...		

☐ Looking for networks...



Other Network Options



Back



Continue

For the purpose of this demonstration we will join a wireless network. Do note that it is advisable to use a Gigabit Ethernet wired network for a server.

Transfer Information to This Mac

If you have important information on another Mac or Windows PC, you can transfer it to this Mac. You can also transfer data from a Time Machine backup or another startup disk.



How do you want to transfer your information?

From Another Mac
From a Windows PC
From Another Disk
Not Now

You can transfer information later using
Migration Assistant.



Back



Continue

Click Not Now and click Continue.

Enable Location Services

Location Services allows apps to gather and use data indicating your approximate location. [Learn more.](#)



☒ Enable Location Services on this Mac



Back



Continue

Disable Location Services and click Continue.

Enable Location Services



Are you sure you don't want to use Location Services?

Some features, such as Find My Mac, won't be available until you turn on Location Services.

Use Location Services

Don't Use



☐ Enable Location Services on this Mac



Back



Continue

Click Don't Use.

Apple ID

Your Apple ID is used to set up the iTunes Store, the Mac App Store, iCloud, and more on your Mac. [Learn more.](#)



[Want to use different Apple IDs for iCloud and iTunes?](#)

[Forgot Apple ID or Password?](#)



Create a Free Apple ID



Back



Continue



Skip

Click Skip.



Are you sure you want to skip signing in with an Apple ID?

An Apple ID is used to automatically set up the iTunes Store, App Store, iCloud, and more.

Don't Skip

Skip



Apple ID

Password

Want to use different Apple IDs for iCloud and iTunes?

Forgot Apple ID or Password?



Create a Free Apple ID



Back



Continue



Skip

Click Skip.

Terms and Conditions

To continue installing the software you must agree to the terms of the software license agreement.

ENGLISH

APPLE INC.
SOFTWARE LICENSE AGREEMENT FOR OS X MOUNTAIN LION
For use on Apple-branded Systems

PLEASE READ THIS SOFTWARE LICENSE AGREEMENT ("LICENSE") CAREFULLY BEFORE USING THE APPLE SOFTWARE. BY USING THE APPLE SOFTWARE, YOU ARE AGREEING TO BE BOUND BY THE TERMS OF THIS LICENSE. IF YOU DO NOT AGREE TO THE TERMS OF THIS LICENSE, DO NOT INSTALL AND/OR USE THE APPLE SOFTWARE AND, IF PRESENTED WITH THE OPTION TO "AGREE" OR "DISAGREE" TO THE TERMS, CLICK "DISAGREE". IF YOU ACQUIRED THE APPLE SOFTWARE AS PART OF AN APPLE HARDWARE PURCHASE AND IF YOU DO NOT AGREE TO THE TERMS OF THIS LICENSE, YOU MAY RETURN THE ENTIRE APPLE HARDWARE/SOFTWARE PACKAGE WITHIN THE RETURN PERIOD TO THE APPLE STORE OR AUTHORIZED DISTRIBUTOR WHERE YOU OBTAINED IT FOR A REFUND, SUBJECT TO APPLE'S RETURN POLICY FOUND AT http://www.apple.com/legal/sales_policies/. YOU MUST RETURN THE ENTIRE HARDWARE/SOFTWARE PACKAGE IN ORDER TO OBTAIN A REFUND.

IMPORTANT NOTE: To the extent that this software may be used to reproduce, modify, publish or distribute materials, it is licensed to you only for reproduction, modification, publication and distribution of non-copyrighted materials, materials in which you own the copyright, or materials you are authorized or legally permitted to reproduce, modify, publish or distribute. If you are uncertain about your right to copy, modify, publish or distribute any material, you should contact your legal advisor.



Back



Continue

Click Continue.



I have read and agree to the OS X
Software License Agreement.

To continue installing the software you must agree to the license

Cancel

Agree

are license

IMPORTANT

Use of your Mac computer, the OS X software and related services is subject to these Terms and Conditions. Please read them carefully.

A. OS X Software License Agreement

By clicking "Agree," you are agreeing to be bound by these Apple and third party terms.



A copy of the License is saved on your system and can be found through
About this Mac. It is also posted at <http://www.apple.com/legal/ola>



Back



Continue

Click Agree.

Create Your Computer Account

Enter a name and password to create your computer account. You need this password to administer your computer, change settings, and install software.

Full Name:



Account Name:

This will be used as the name for your home folder.

Password:

☐ Allow my Apple ID to reset this user's password

☒ Require password when logging in

Password Hint:

This hint will be visible to anyone who uses your Mac.



Back



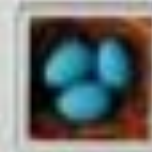
Continue

Create the account for the server administrator. Username in this example is ladmin and password is ladmin. Tick Require password when logging in. Leave Password Hint: blank. Click Continue.

Create Your Computer Account

Enter a name and password to create your computer account. You need this password to administer your computer, change settings, and install software.

Full Name:



Account Name:

This will be used as the name for your home folder.

Password:

☐ Allow my Apple ID to reset this user's password

☒ Require password when logging in

Password Hint:



If you forget your password, you may not be able to recover your data. Click Continue to skip.



Back



Continue

Ignore the warning and click Continue.

Select Your Time Zone

To select a time zone, click the map near your location and choose a city from the Closest City menu.
You can also have the time zone change automatically, if possible, based on your current location.

☐ Set time zone automatically using current location



Time Zone: Malaysia Time

Closest City: Kuala Lumpur - Malaysia



Back



Continue

Choose your time zone and click Continue.

Register

Register this device to your Apple ID to stay up to date on product information and get faster access to support.

Town or City

County, State, Province, or Region

Email address



Keep me up to date with Apple news, software updates, and the latest information on products and services.



Back



Continue



Skip

Click Skip.



Are you sure you don't want to register?

Registering this device with your Apple ID will help you stay up to date on product information and get faster access to support.

Go Back

Skip

Register this device to your Apple ID to stay up to date on product information and get faster access to support.

Town or City

County, State, Province, or Region

Email address

☒ Keep me up to date with Apple news, software updates, and the latest information on products and services.



Back



Continue

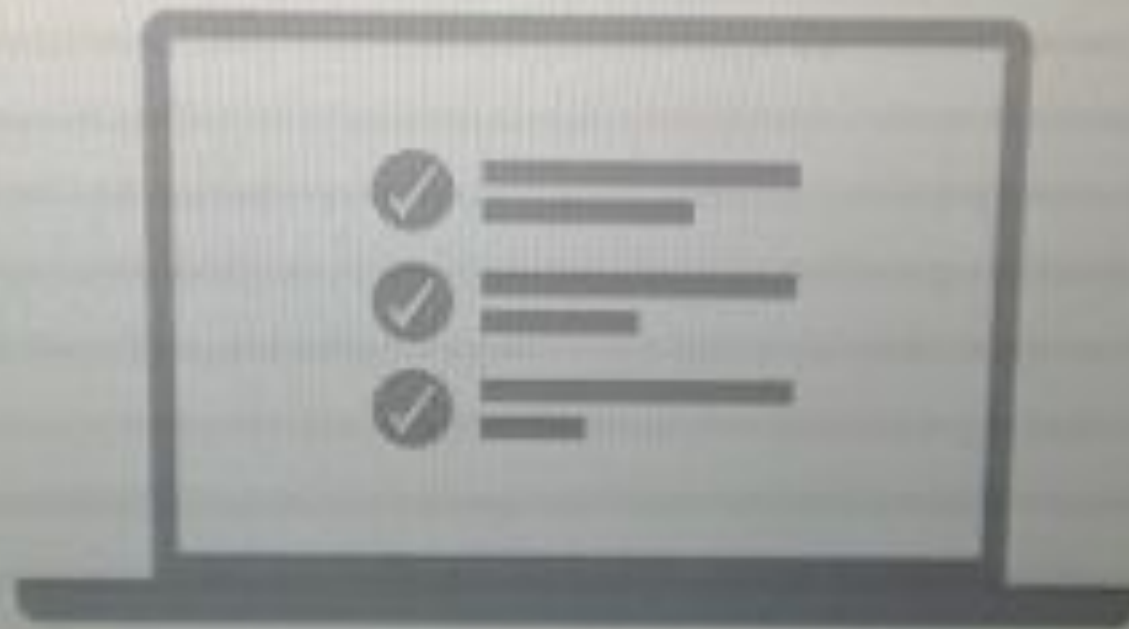


Skip

Click Skip.

Thank You

Your Mac is set up and ready to use.



Start using your Mac.

Click Start using your Mac.

Server installation



In an ideal OS X Server deployment, there would be a DNS server present and you would use a fixed IP and a fast Ethernet connection for the server. Here for the purpose of this demo, we'll use Bonjour and a wireless connection. Configure your network to use DHCP with manual address.



Click Apply.



Change the computer name to the name you'd like to use for your server. Here, we use mountainlionserver.



Download Server.app from the App Store.



Launch Server.app. Click Continue.



Click Agree.



Enter the Administrator username and password and click Allow.



Click Local Network and click Continue.



Enter the host name as shown and click Continue.

Server

Apple Push Notifications

Notify users when they receive alerts, events, and email messages.

Apple ID:

Example: name@example.com

Password:



Enter your AppleID so your server will be able to generate Push Notifications (required for Profile Manager later).



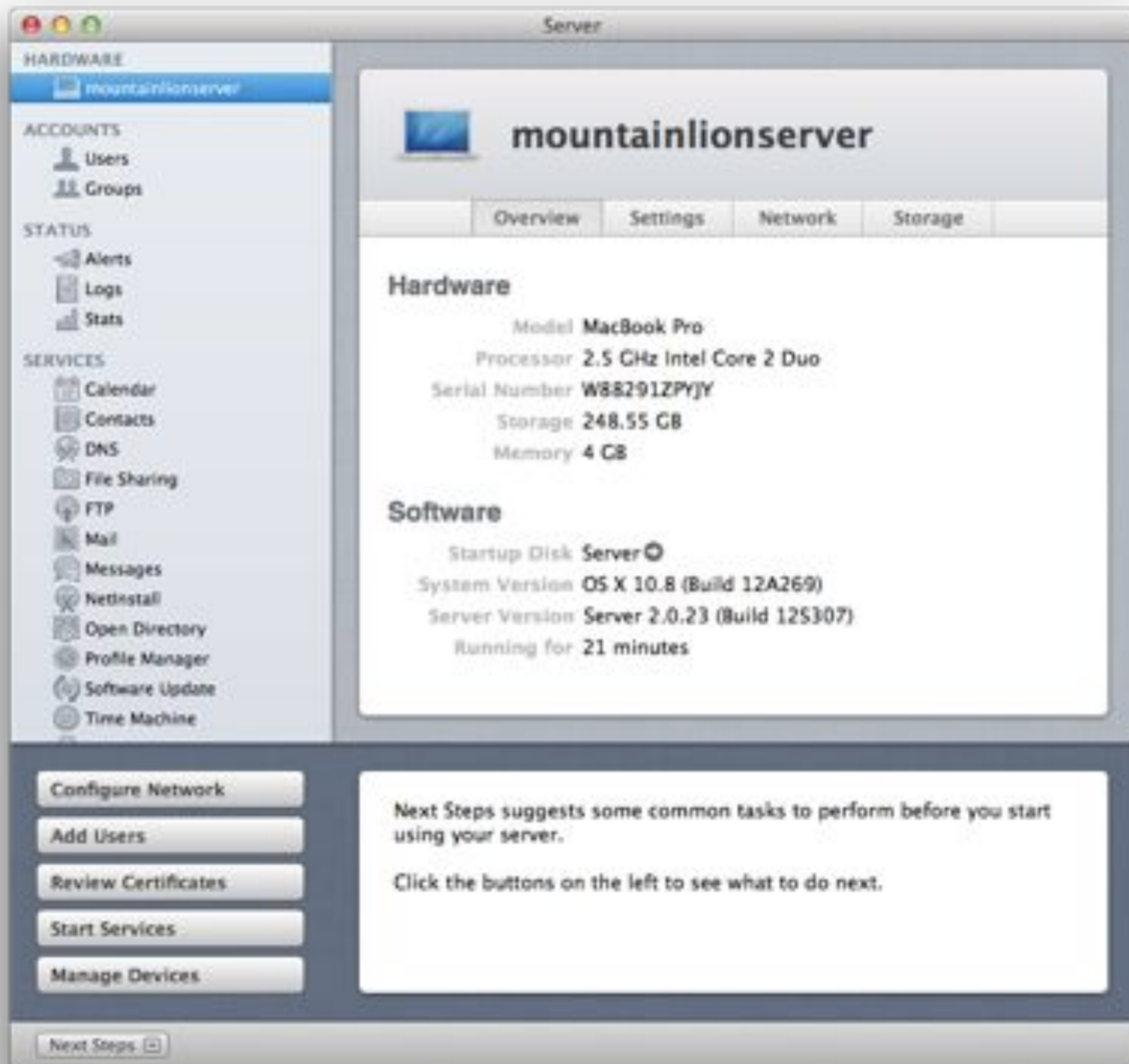
If you don't have an AppleID you can create one at appleid.apple.com.



Wait for server to complete service configuration.



Click Finish.

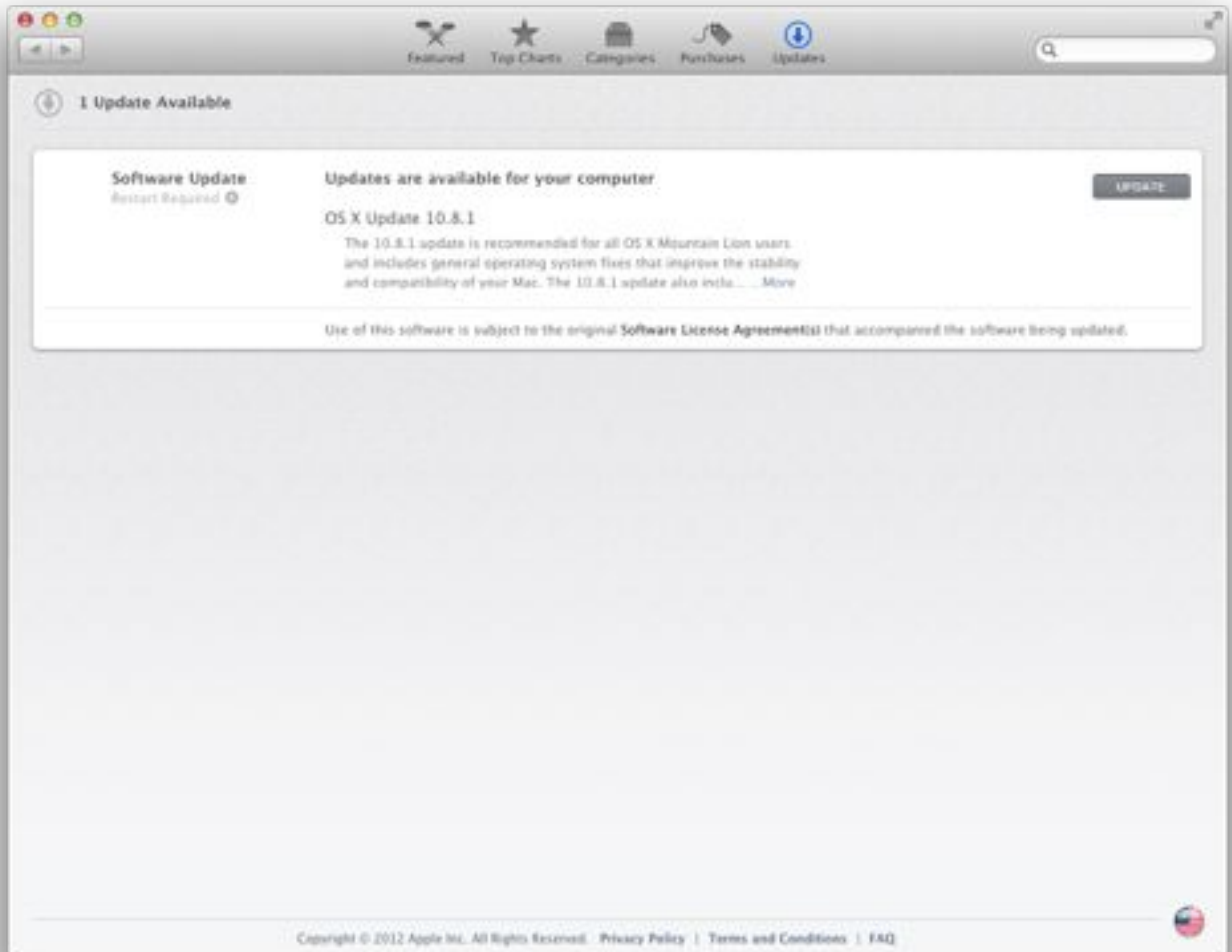


Server app will now display services on the left pane.

Software Update



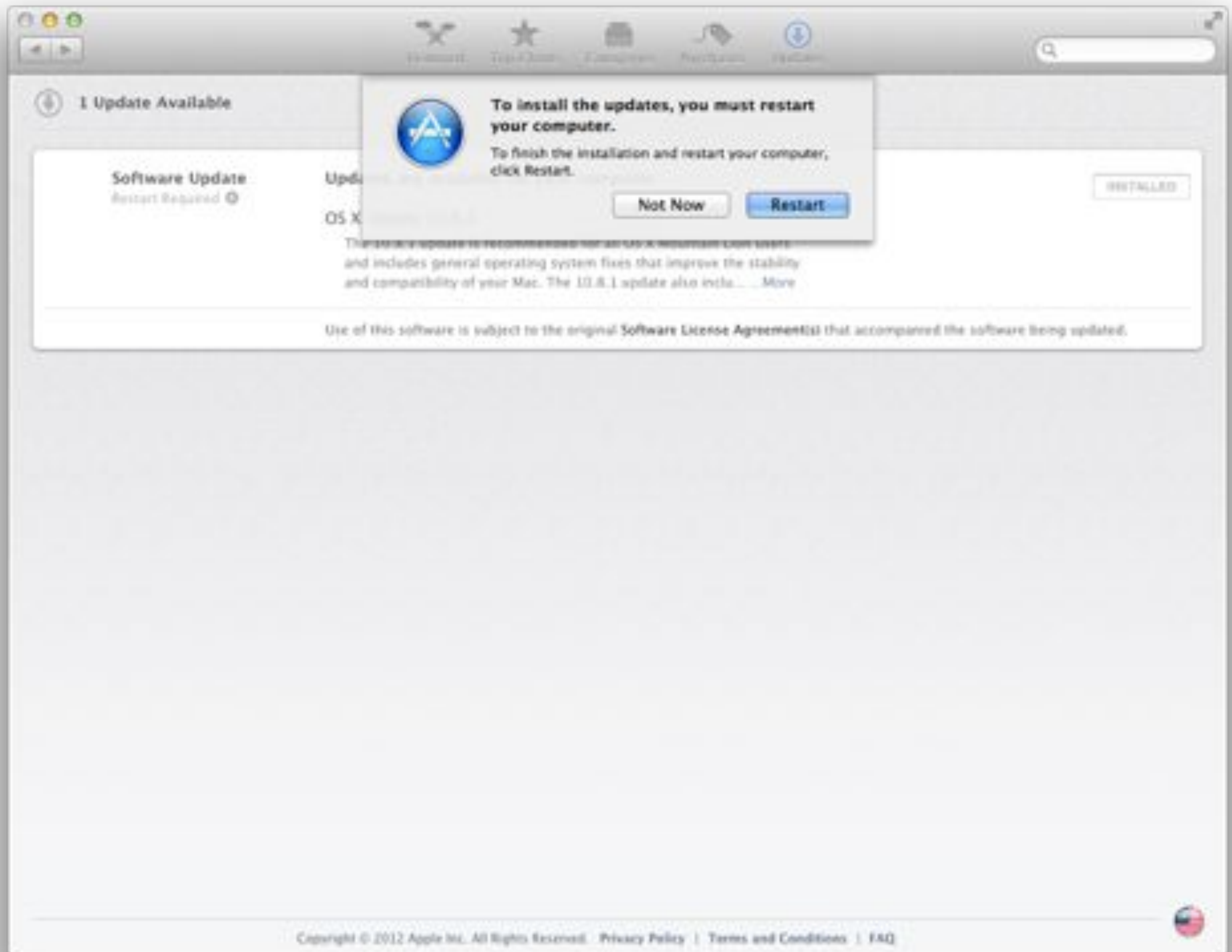
Choose Software Update... from the Apple menu.



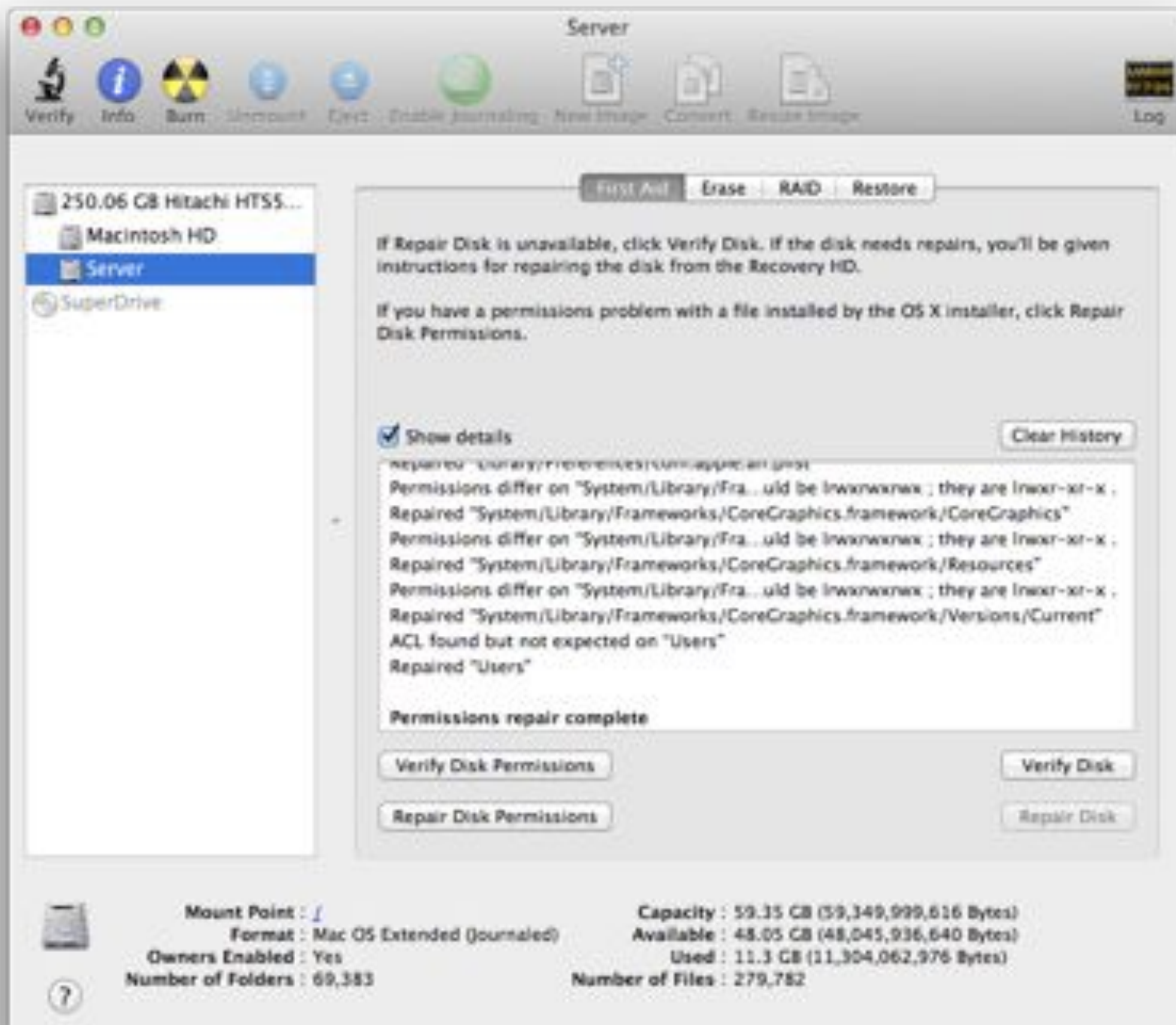
Notice there is an OS X 10.8.1 update. Click Update.



Click Agree.



Click Restart.



After the computer has restarted use Disk Utility to make sure the hard disk does not have any issues.

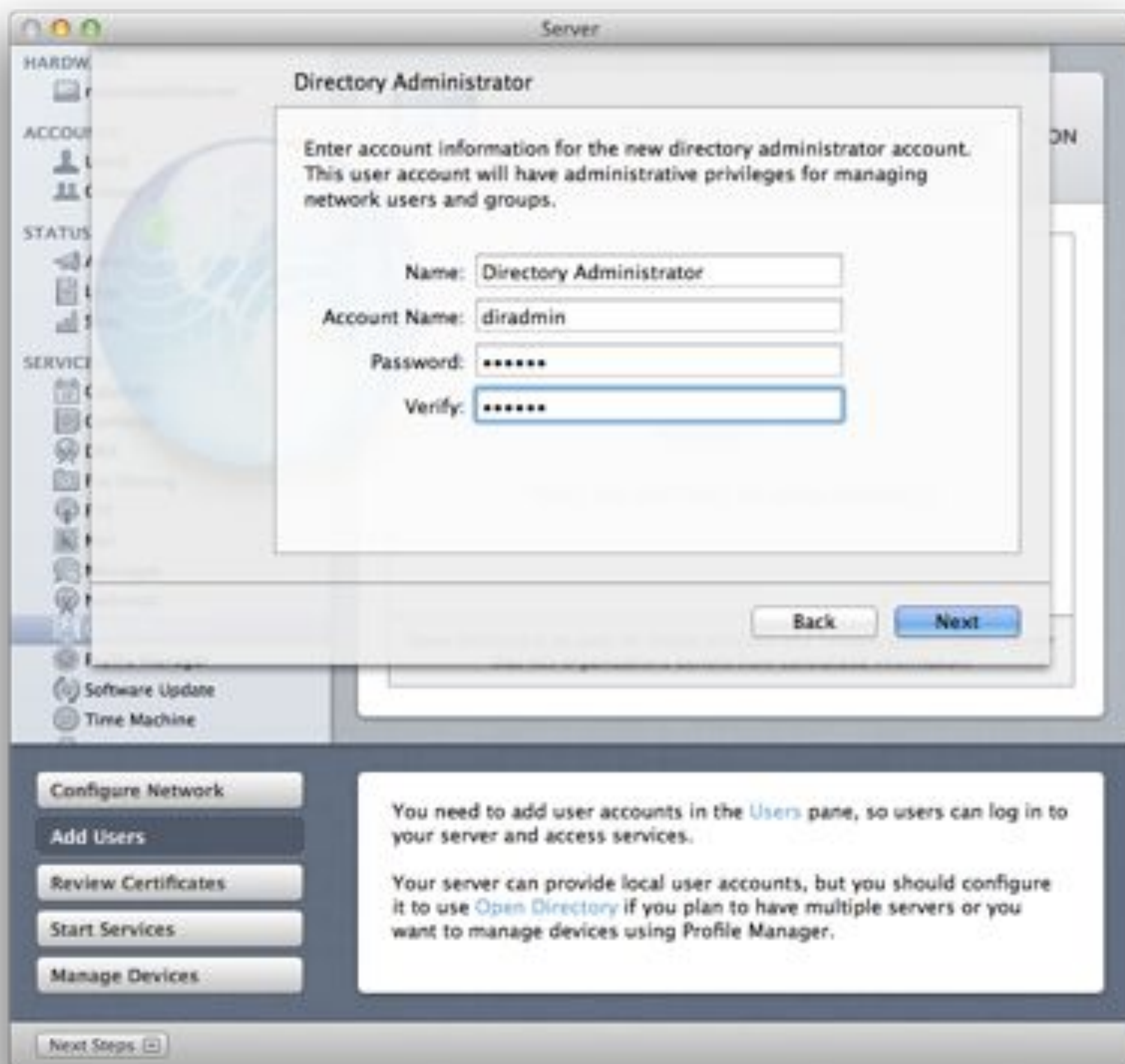
Open Directory



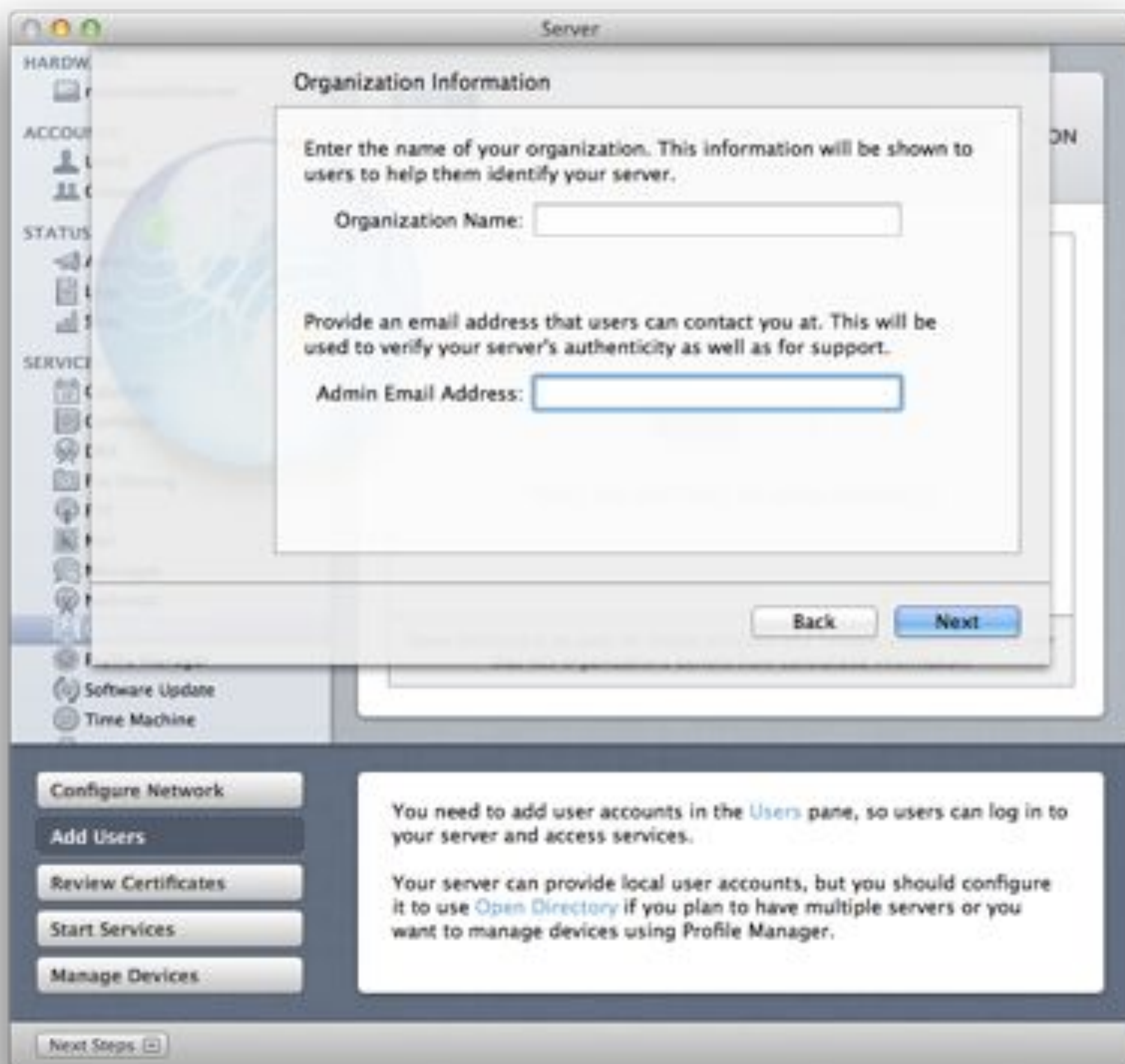
Select Open Directory from the left pane. Slide the switch to On.



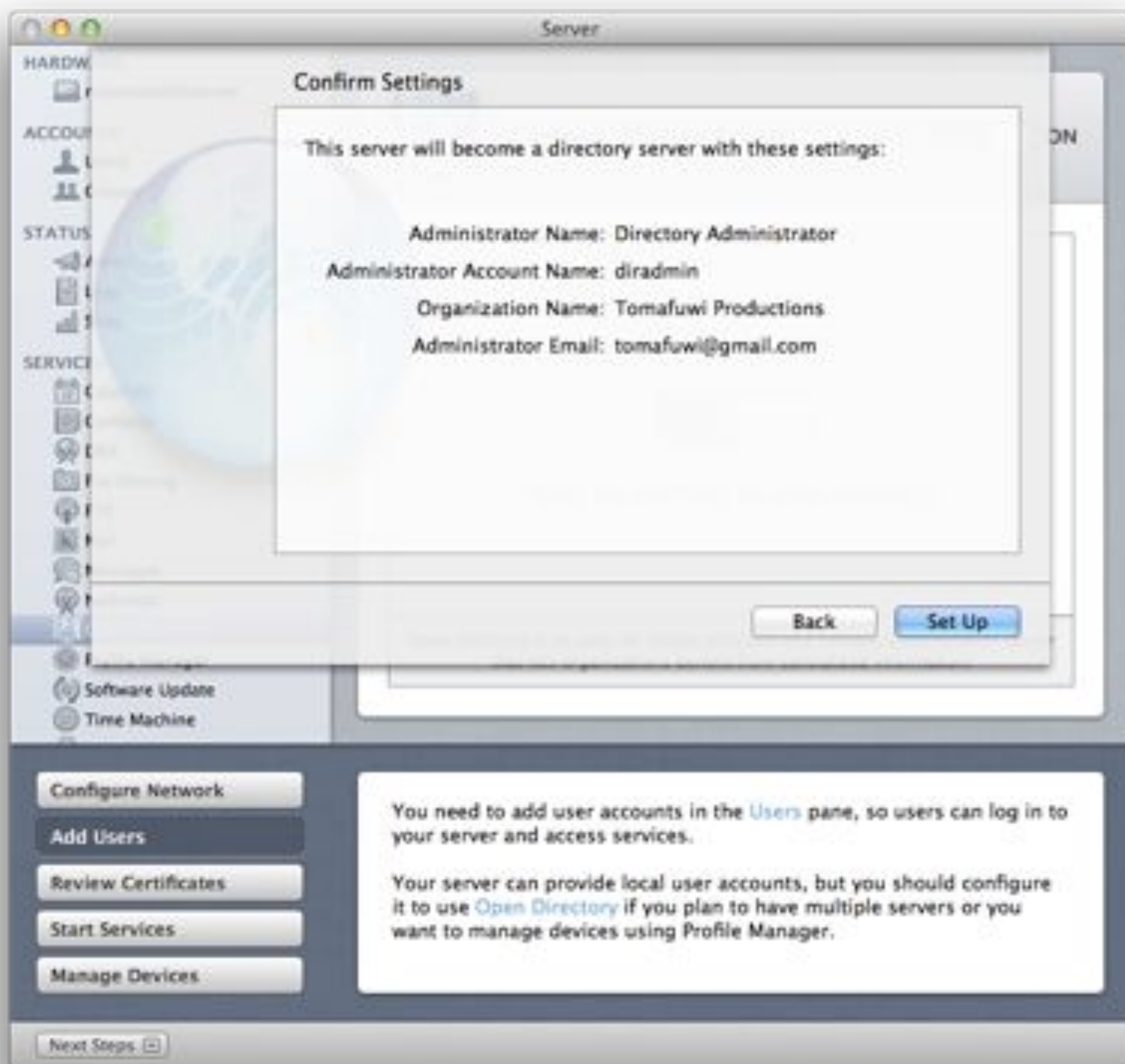
Choose Create a new Open Directory domain. Click Next.



Put in the username and password of the Directory Administrator. This is the person who will be administering the network directory domain. Click Next.



Enter the Organization Name: and Admin Email Address:. Click Next.



Click Set Up.



Click on the gear wheel.



Choose Edit Global Password Policy.



This allows you to modify the password policy for your server.
Open Directory has been configured.

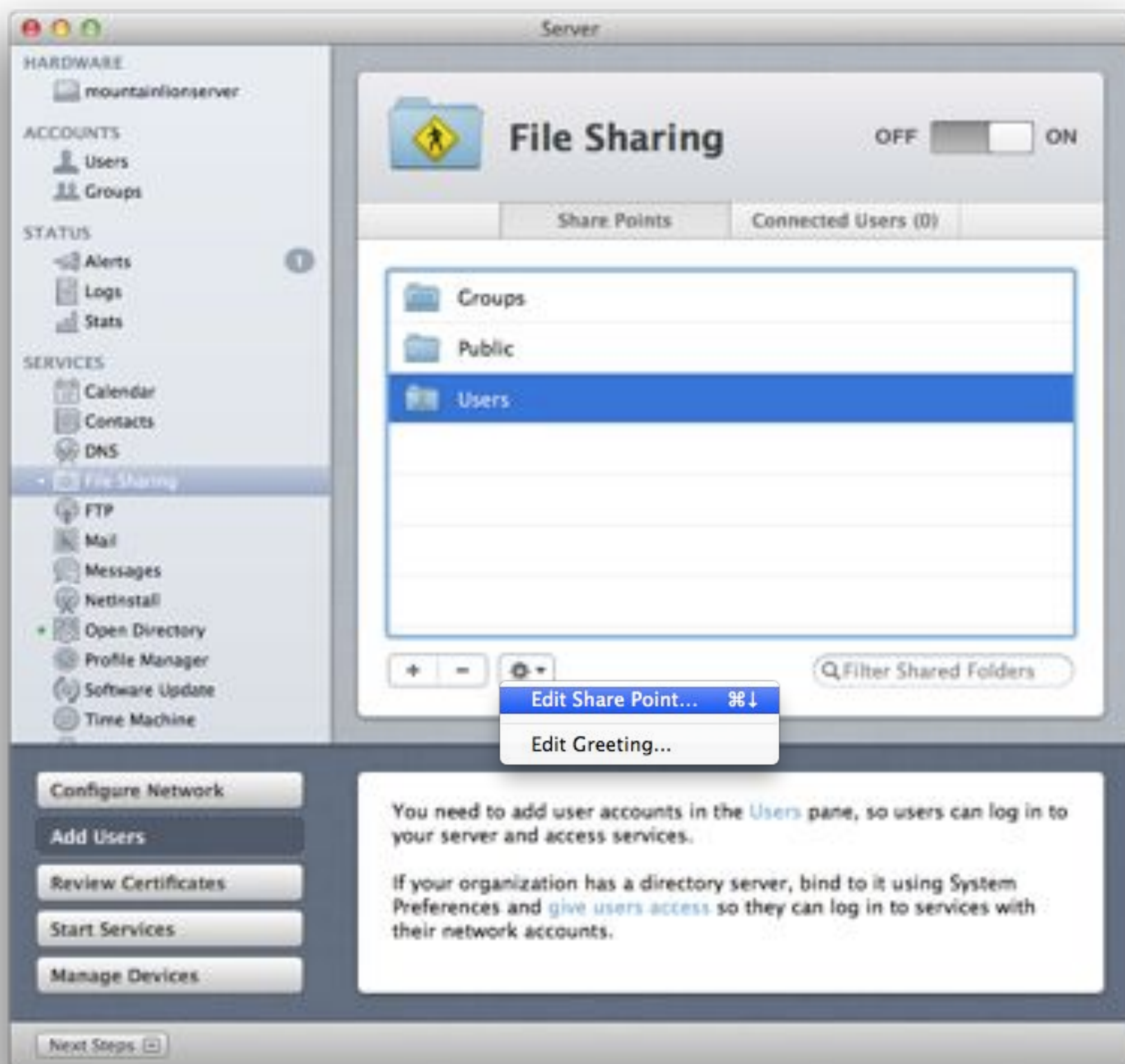
File sharing



Choose File Sharing in the left pane. Slide the switch to On.



Click Users. Click the Gear wheel.



Choose Edit Share Point...



Tick all the check boxes. This will allow users using Macs, Windows and iPads to be able to share files with each other. This also allows guest access and network home directories. Click Done.

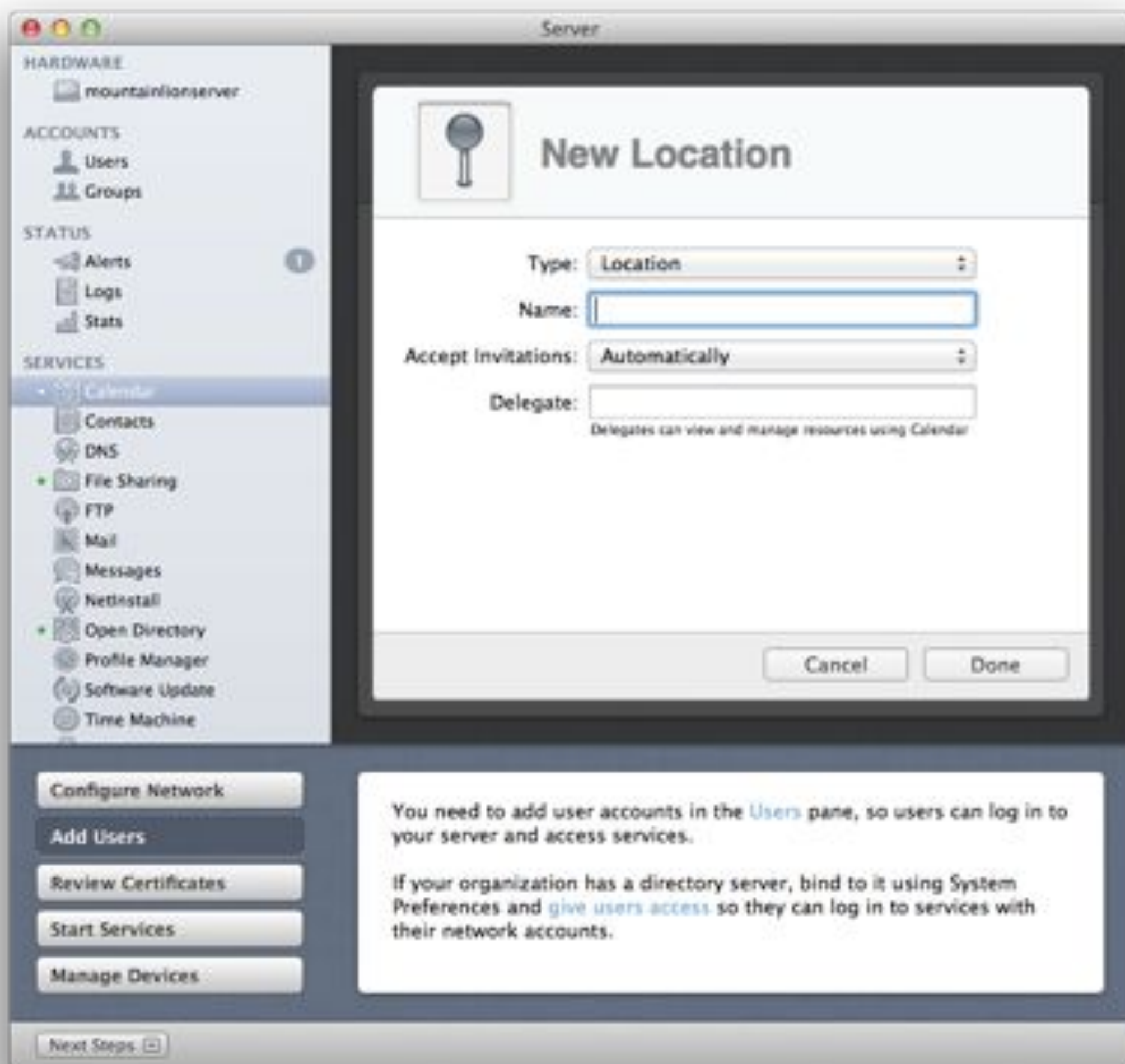


File sharing has been configured.

Calendar



Click Calendar in the left pane. Slide the switch to On. Tick Enable invitations by email. Click +.



Type in the details of a new location (Eg. Meeting Room One).



You need to add user accounts in the [Users](#) pane, so users can log in to your server and access services.

If your organization has a directory server, bind to it using System Preferences and [give users access](#) so they can log in to services with their network accounts.

Click Done.



You can also create resources in the same way.



Calendar service has been configured.

Contacts



Choose Contacts on the left pane. Tick Include directory contacts in search. Slide the switch to On.



Contacts service has been configured.

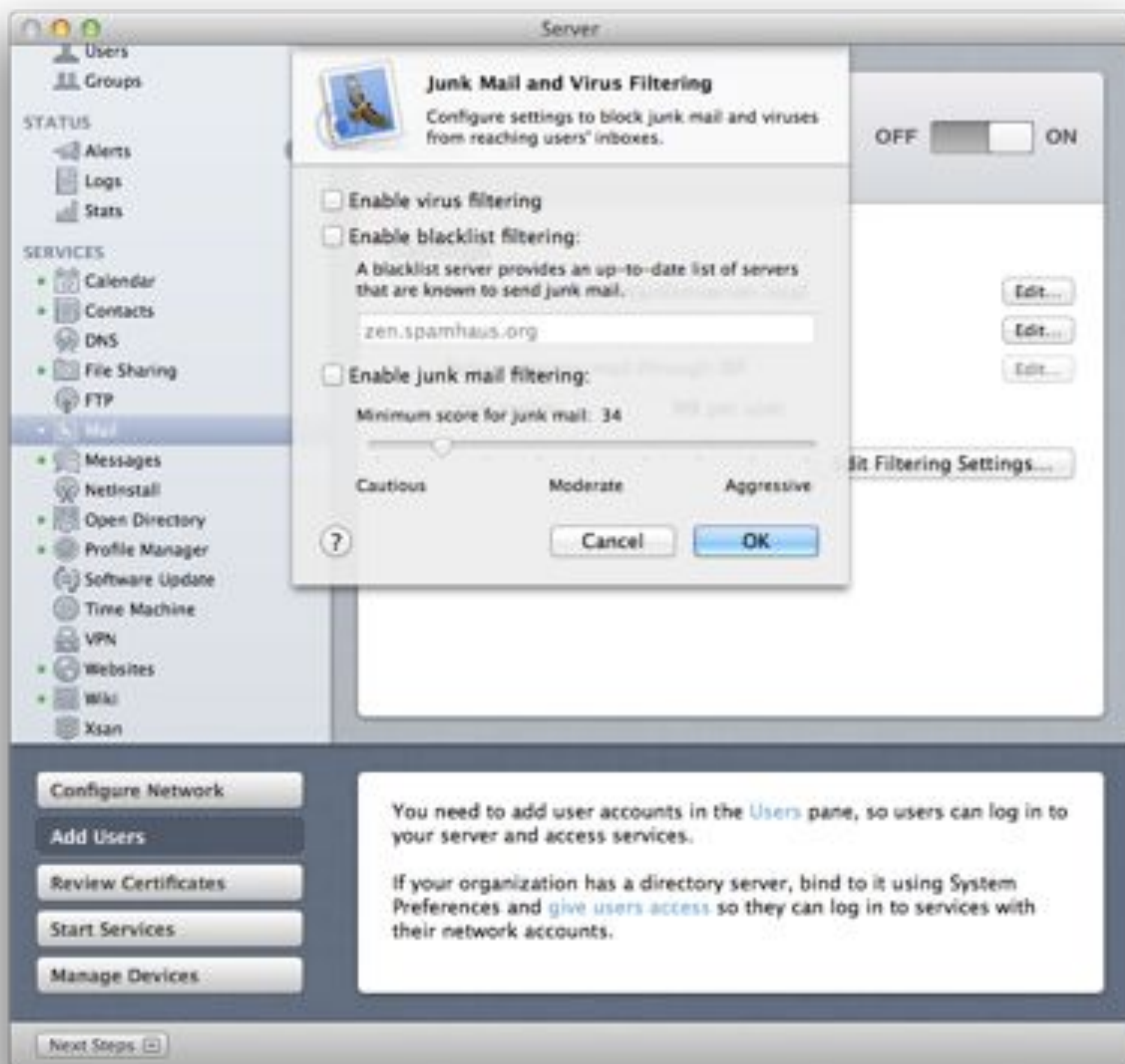
Mail



Click Mail in the left pane. Slide the switch to On.



Click Edit Filtering Settings.



For the purpose of this demonstration, we will switch off the filtering settings for now. Mail service has been configured.

Messages

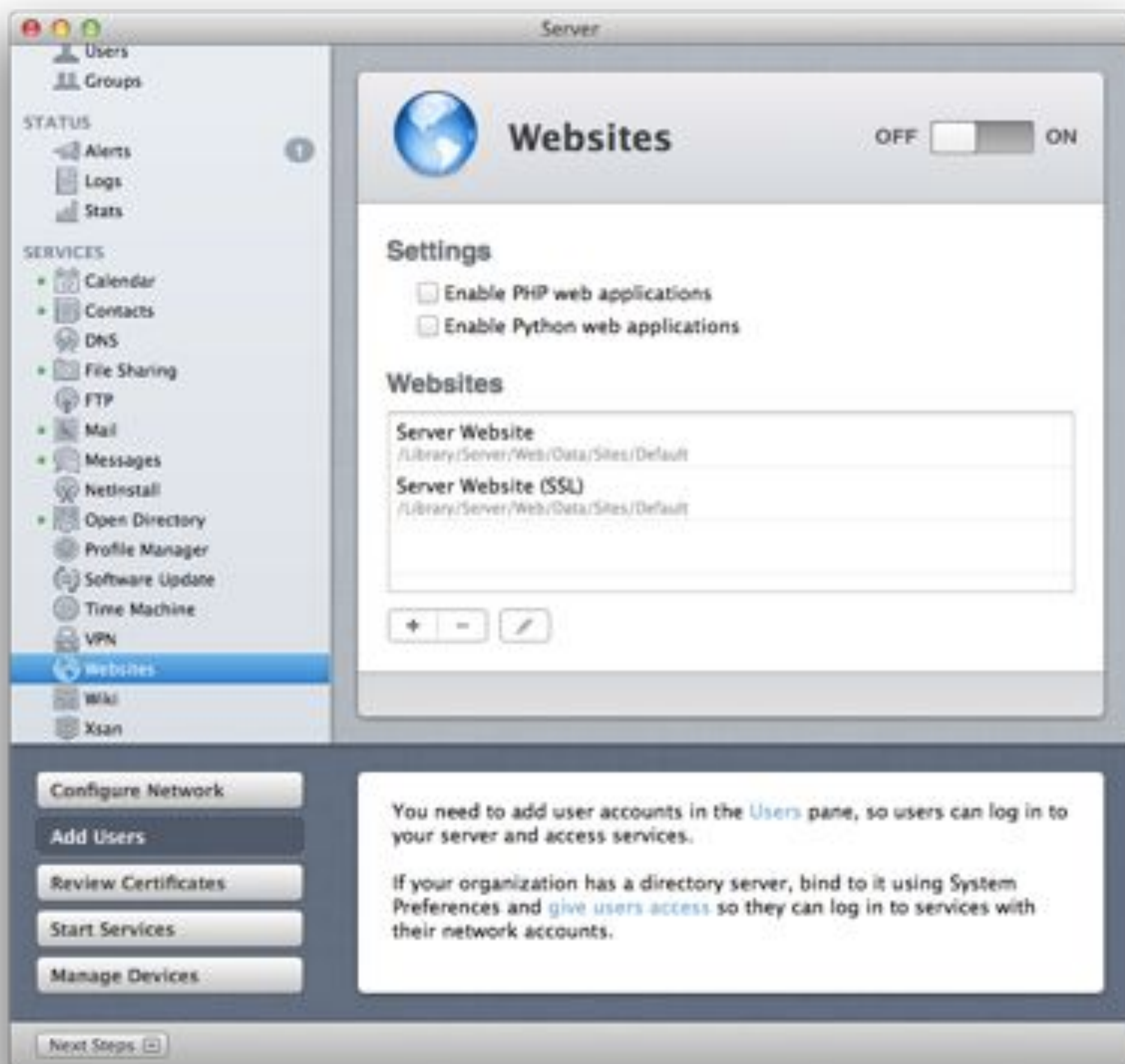


Click Messages in the left pane. Slide the switch to On. Tick both check boxes.

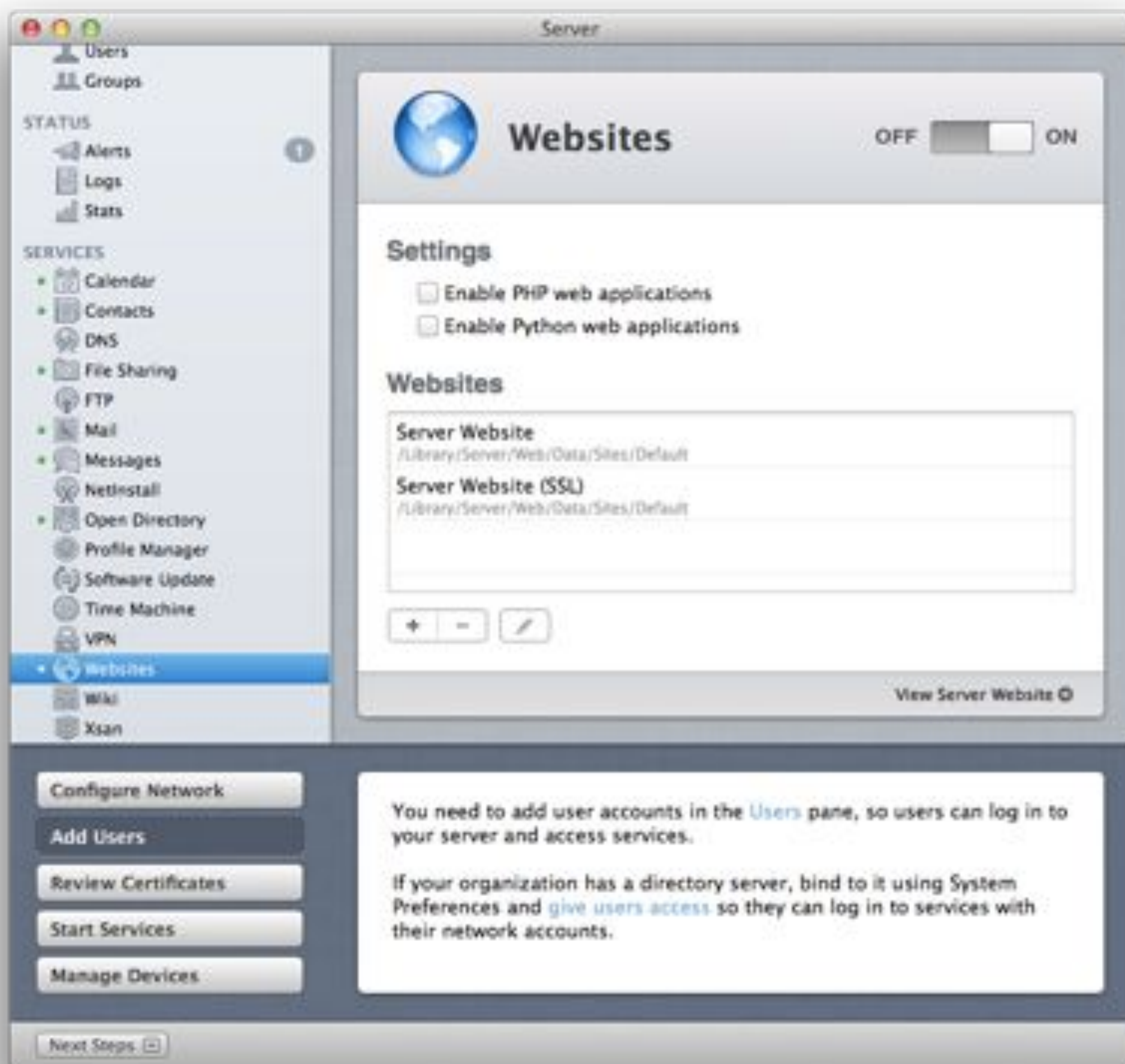


Messages service has been configured.

Websites



Click Websites in the left panel. Slide the switch to On.



Website service has been configured.

Wiki



Choose Wiki from the left pane. Tick the WebDAV checkbox. Slide the switch to On.



Wiki service has been configured.

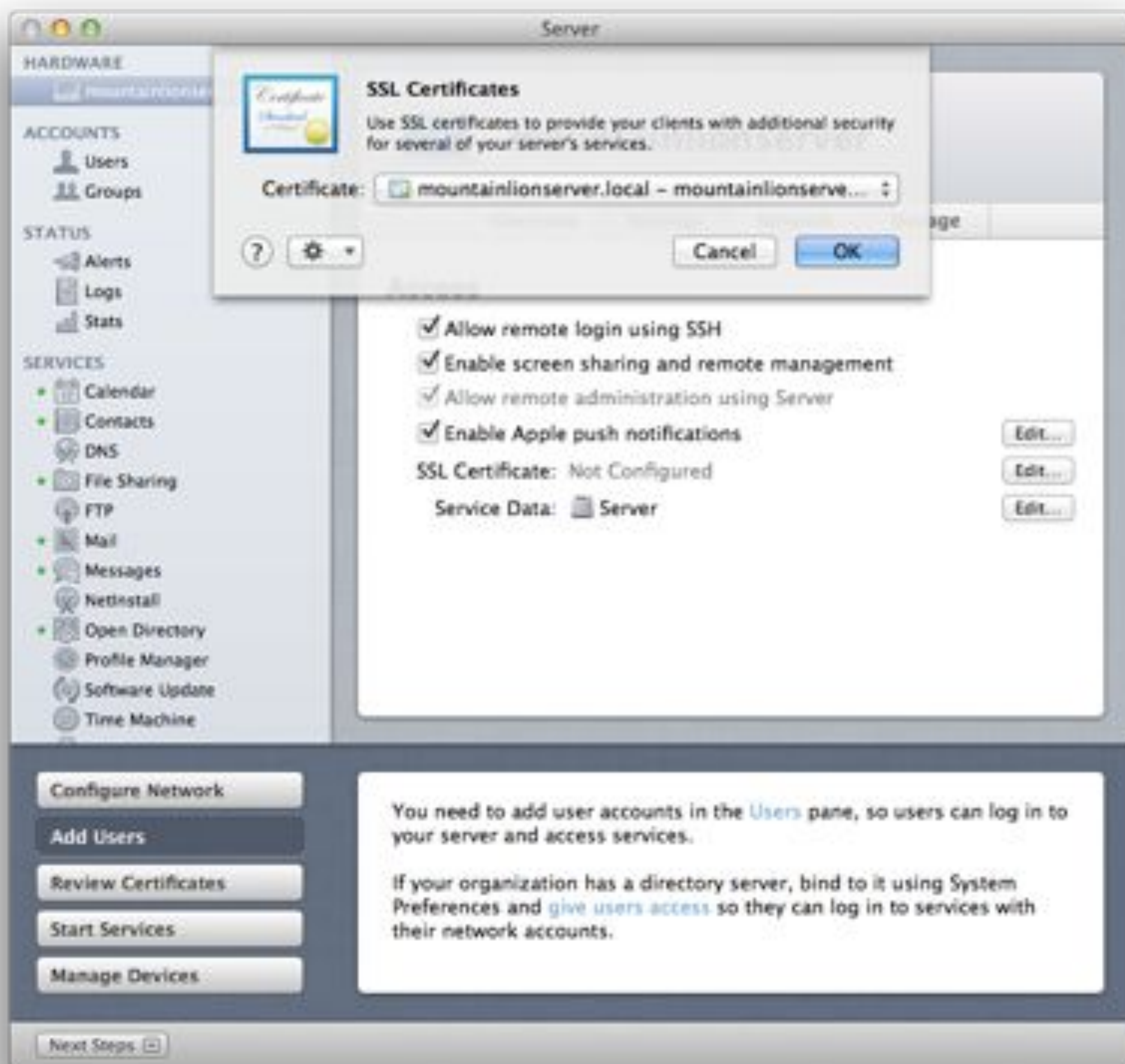
Certificates



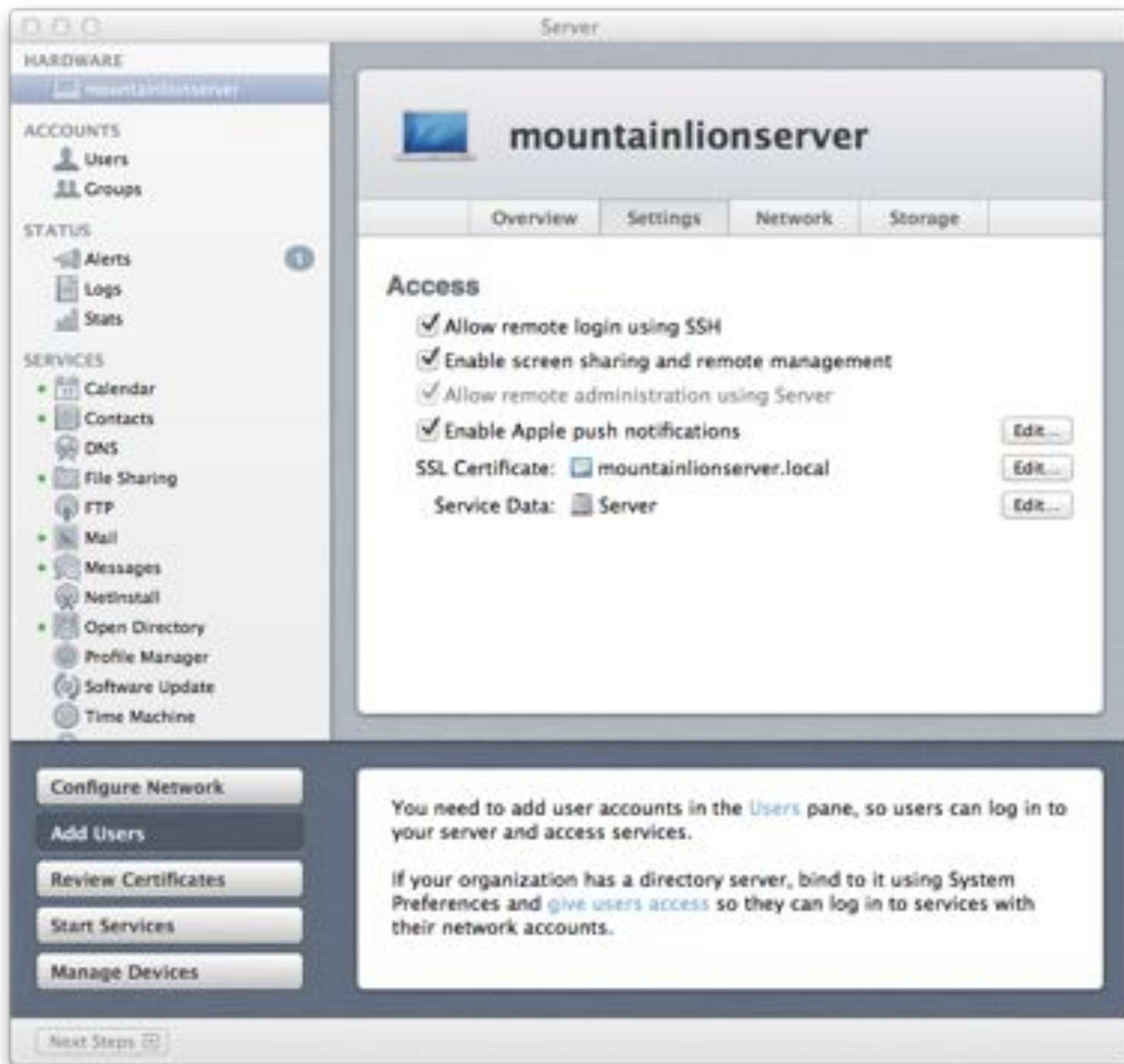
Click on your server in the left pane. Choose Settings.



Click Edit next to SSL Certificates.



Choose the self-signed certificate. Click Ok.



Certificate has been configured.

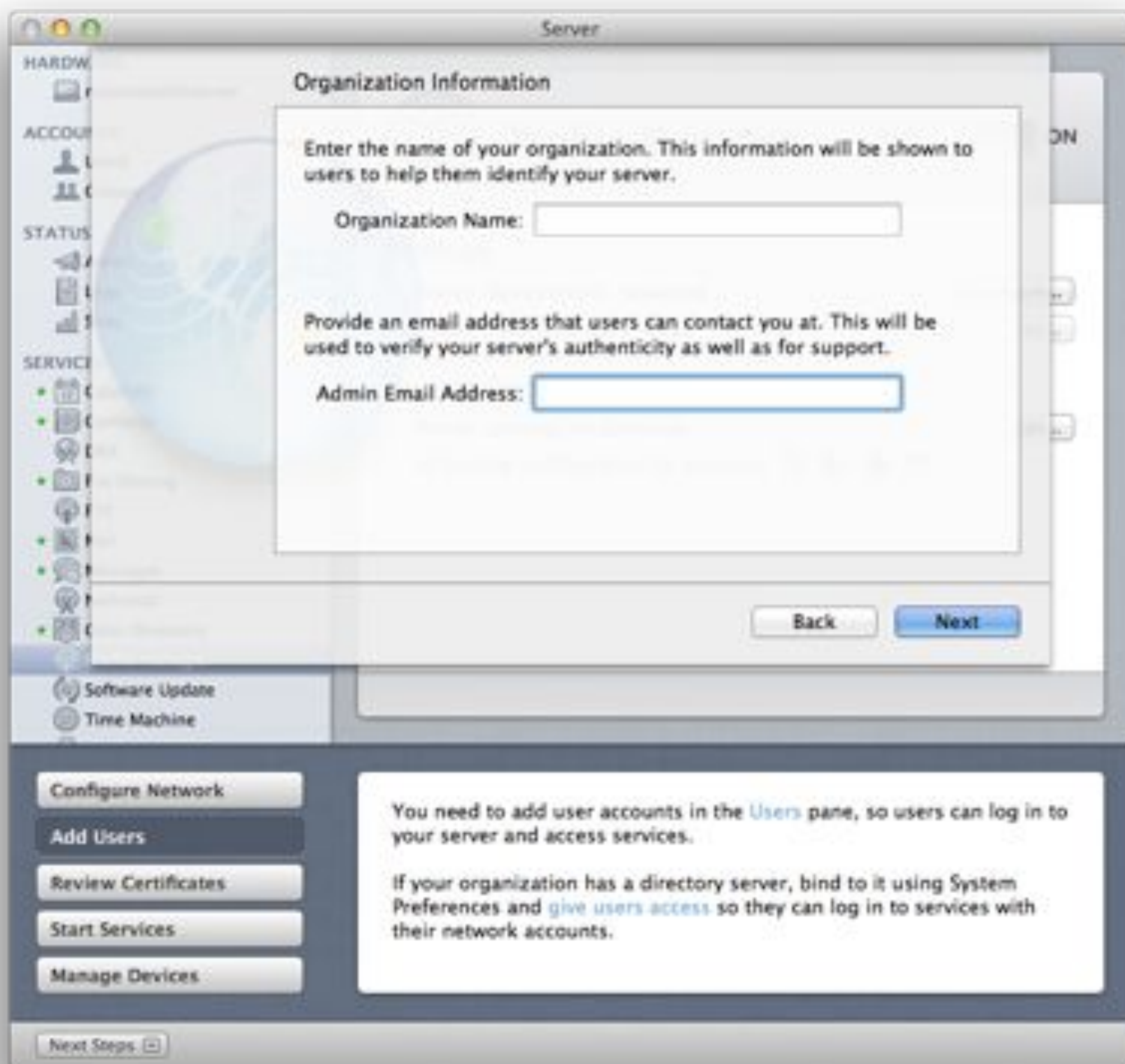
Profile Manager



Choose Profile Manager in the left pane. Click Configure.



Click Next.



Enter your Organization Name: and Admin Email Address:. Click Next.



Choose your server's self signed certificate. Click Next.



Profile Manager has been set up. Click Finish.



Tick Sign configuration profiles. Tick Edit.



Choose your server's code signing certificate. Click Ok.



Slide the switch to On.



Profile manager service has been configured.

Users and Groups



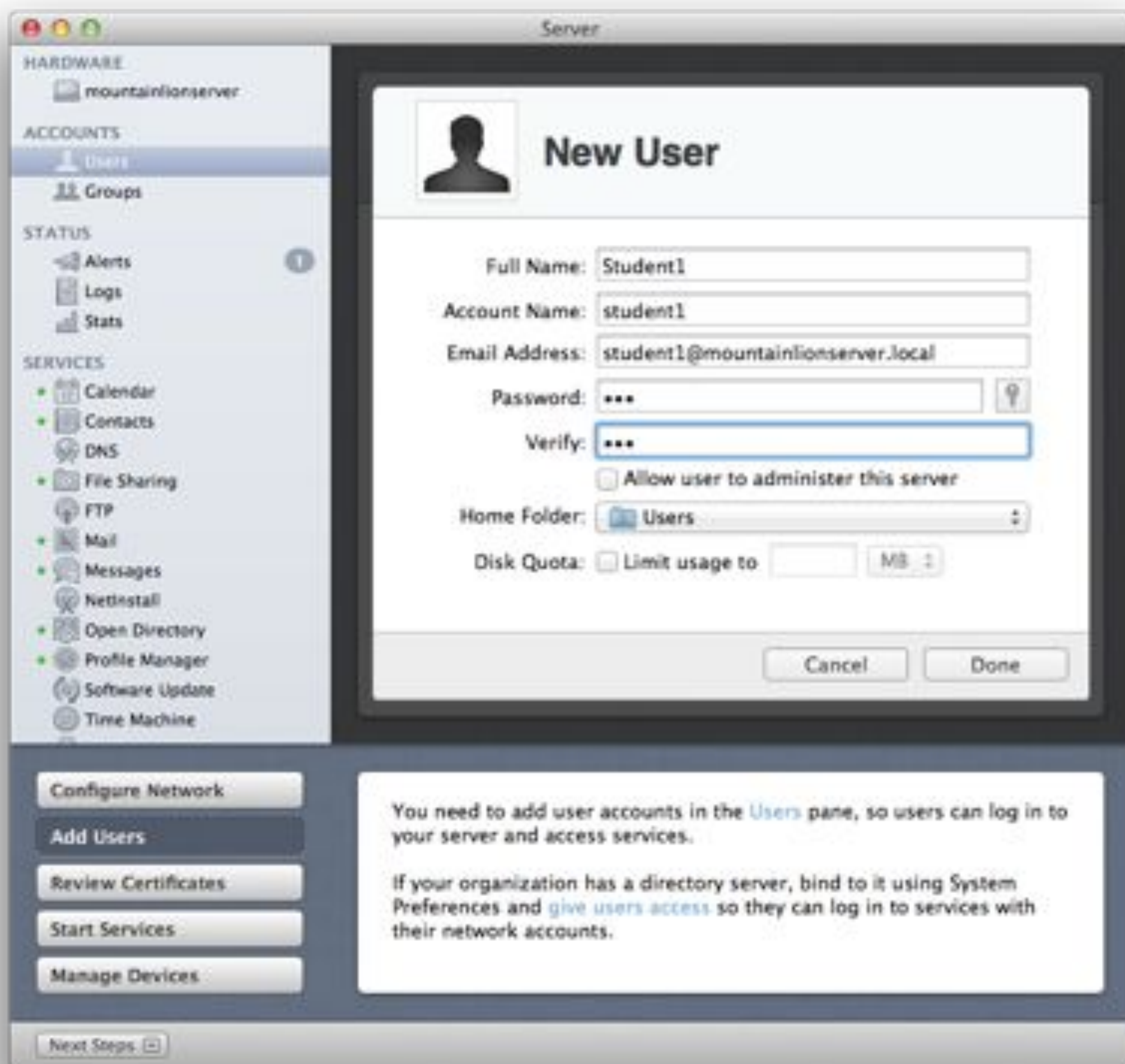
Click Users in the left pane. Click the + button.



Create an account for a teacher. We will use Teacher1 as an example. Click Done.



Create five Teacher accounts.



Create an account for a student. We will use Student 1 as an example.



Create five student accounts.



Click Groups in the left pane. Click +.



Create a group called All Teachers as shown. Click Done.



Double click on the All Teachers group.



Tick Make group members Messages buddies. Click + and add all the teachers to the group.



Click Done.



You need to add user accounts in the [Users](#) pane, so users can log in to your server and access services.

If your organization has a directory server, bind to it using System Preferences and [give users access](#) so they can log in to services with their network accounts.

Create a group, All Students and click Done.



Double click All Students.



Add all the students to the group and click Done. Users and Groups have been configured.

Q&A